

Sheerweave 4300



- Application:**
- Roller, Roman and Panel Window Blinds
 - Wide Width Windows

- Characteristics:**
- 3200mm

- Technical:**
- Composition: SW4300 is a revolutionary sunscreen manufactured using DOW ECOLIBRIUM bio based plasticizers, rather than fossil fuel based Plasticizers. DOW Ecolibrium does not detract from the sunscreen's appearance or performance, and provides a sustainable green alternative to traditional sunscreens, without the PVC smell.
 - 1/2 Basketweave
 - Openness Factor: 3%
 - UV Blockage 97% approx.
 - Light Fastness: minimum 6 (Blue Scale) Tested to ISO 105-B02:2014
 - Nominal Weight: 510 gsm
 - Nominal Thickness: 0.73mm
 - Lead Free
 - Printable

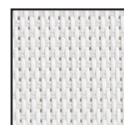
- Protection:**
- Fire Classification: Tested to AS1530 Part II & III, and NFPA 701.
 - Greenguard Gold - accredited for use in sensitive areas eg. schools and healthcare facilities (tested against California section 01359 for low chemical emissions (VOCs))
 - Treated with Microban - giving lifelong Protection
 - Low Odour Emissions (no PVC smell)

- Care:**
- Fabric should be regularly dusted / vacuumed as appropriate. Wipe with water and mild detergent. Do not roll up when fabric is damp.

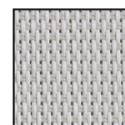
Colour Range *



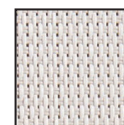
Sheerweave 4300



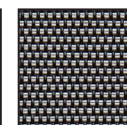
white



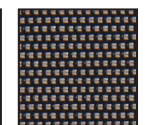
white stone



sandstone



slate stone



charcoal gold



charcoal

Sheerweave 4300



Solar Optical Properties: Fabrics installed internally zero-degree profile angle

| Colour | Solar Optical Properties | | | | Shading Coefficient | |
|---------------|--------------------------|----|----|----|---------------------|--------|
| | Ts | Rs | As | Tv | 3mm CL | 6mm CL |
| White | 11 | 76 | 13 | 10 | 0.25 | 0.24 |
| White Stone | 10 | 60 | 30 | 11 | 0.33 | 0.32 |
| Sandstone | 7 | 41 | 52 | 8 | 0.50 | 0.48 |
| Charcoal Gold | 5 | 19 | 76 | 7 | 0.63 | 0.60 |
| Slate Stone | 6 | 11 | 83 | 7 | 0.69 | 0.66 |
| Charcoal | 4 | 3 | 93 | 5 | 0.73 | 0.69 |

Ts: Solar Transmittance

Rs: Solar Reflectance

As: Solar Absorptance

Tv: Visual Transmittance

3mm CL: 3mm Clear Glass

6mm CL: 6mm Clear Glass